

## SPECIFICATION SHEET

**Product Name: Cor a 11**

**Catalog # CA11-A37A**

**Product Description:** Native *Corylus avellana* (Hazelnut) allergen.

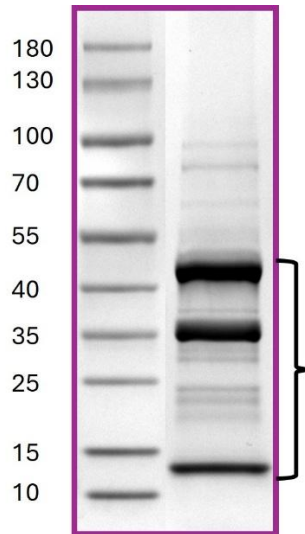
**Storage and Stability:** Store at -20°C. To avoid repeated handling and multiple freeze/thaw cycles aliquot diluted product into smaller quantities.

### Data for a Sample Lot:

**Alternate Names** : 7S seed storage globulin (vicilin-like)  
**Source** : *Corylus avellana* (Hazelnut)  
**Accession Numbers** : Genbank: [AF441864](https://www.ncbi.nlm.nih.gov/nuclot/AF441864)  
**Host** : Native protein  
**Formulation** : Native protein stored in 30mM Tris-Cl, pH8.0 solution  
**Molecular weight** : Multiple subunits, ~48 kDa, ~35kDa, ~9 kDa

**Purity** : The purity was determined to be ≥90% by densitometry

### Gel Image



### References

1. Giannetti A., et al. Natural History of Hazelnut Allergy and Current Approach to Its Diagnosis and Treatment. *Children* 2023, 10, 585.
2. Rigby N., et al. The purification and characterization of allergenic hazelnut seed proteins. *Mol. Nutr. Food Res.* 2008, 52, S2, 51-S261.